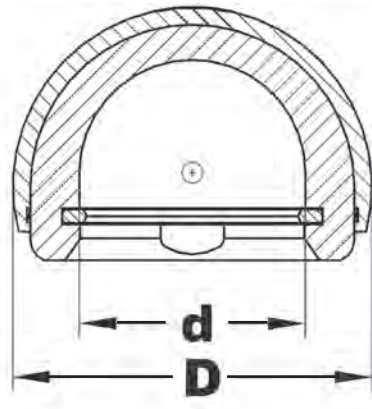


## Vario-Cup Prosthesis System & Large Heads



**LINK® Vario-Cup Prostheses – self-centering –**



Materials:  
CoCrMo alloy and UHMWPE

Inner Ø (d)			Outer Ø (D)
24.1 mm	28.1 mm	32.1 mm	mm
Item no.	Item no.	Item no.	
107-210/39*#	-	-	39
107-210/40*#	-	-	40
107-210/41*	-	-	41
107-210/42*	-	-	42
107-210/43*	-	-	43
-	107-220/44	-	44
-	107-220/45	-	45
-	107-220/46	-	46
-	107-220/47	-	47
-	107-220/48	-	48
-	107-220/49	107-230/49	49
-	107-220/50	107-230/50	50
-	107-220/51	107-230/51	51
-	107-220/52	107-230/52	52
-	107-220/53	107-230/53	53
-	107-220/54	107-230/54	54
-	107-220/55	107-230/55	55
-	107-220/56	107-230/56	56
-	107-220/57	107-230/57	57
-	107-220/58	107-230/58	58
-	107-220/59	107-230/59	59
-	107-220/60	107-230/60	60
-	107-220/61	107-230/61	61
-	107-220/62	107-230/62	62
-	107-220/63	107-230/63	63
-	107-220/64	107-230/64	64
-	107-220/65	107-230/65	65

\* without safety ring  
# not self-centering

**Safety Ring** for Vario-Cup Prostheses

Material: UHMWPE, height 2.1 mm

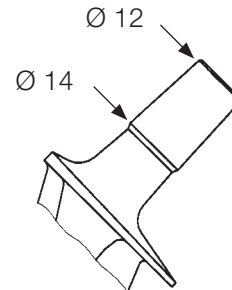
Item No.	Head Ø mm
107-200/28	28
107-200/32	32

## Large Heads

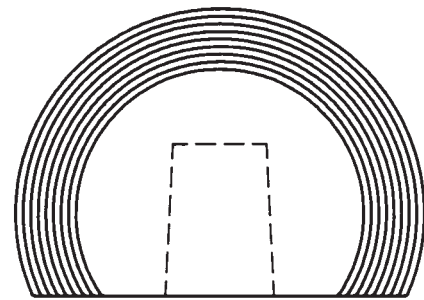
Material: CoCrMo alloy



Taper 12/14 mm



Item no.	Head Ø mm	Head-neck length mm
126-838	38	52
126-840	40	53
126-842	42	54
126-844	44	55
126-846	46	56
126-848	48	57
126-850	50	58
126-852	52	59
126-854	54	60
99-0150/31	56	61
99-0150/32	58	62
99-0150/33	60	63



Head Ø 38 - 60 mm

## Prosthesis Heads B

Material: CoCrMo alloy



Item no.	Head Ø mm	Taper mm	Neck length mm
128-824/01	24	12/14	short -3.5
128-824/02	24	12/14	medium 0
128-828/01	28	12/14	short -3.5
128-828/02	28	12/14	medium 0
128-828/03	28	12/14	long +3.5
128-828/04**	28	12/14	extra long +10.5
128-832/01	32	12/14	short -4.0
128-832/02	32	12/14	medium 0
128-832/03	32	12/14	long +4.0
128-832/04**	32	12/14	extra long +8.5

\*\* on request

**LINK® Vario-Cup Prosthesis System**



**130-799/13**

**Instrument Set, complete**

in Standard Container N11, on tray with storage inserts and product illustrations

consisting of:

**05-2001/03**

**N11 Standard Container**, 575 x 275 x 100 mm

**130-799/14**

**Tray**, empty

perforated stainless steel, 550 x 265 x 50 mm

**162-160**

**Universal handle**, 325 mm

**Trial Cups** for Vario-Cup Prosthesis System

Item no.	Ø mm	Item no.	Ø mm	Item no.	Ø mm	Item no.	Ø mm	Item no.	Ø mm
130-821/39	39	130-821/45	45	130-821/51	51	130-821/57	57	130-821/63	63
130-821/40	40	130-821/46	46	130-821/52	52	130-821/58	58	130-821/64	64
130-821/41	41	130-821/47	47	130-821/53	53	130-821/59	59	130-821/65	65
130-821/42	42	130-821/48	48	130-821/54	54	130-821/60	60		
130-821/43	43	130-821/49	49	130-821/55	55	130-821/61	61		
130-821/44	44	130-821/50	50	130-821/56	56	130-821/62	62		

**130-819**

**Hook** for applying or removing safety rings, 145 mm



**Large Heads**

**05-2001/03 N11 Standard Container**, 575 x 275 x 100 mm

Large Head Trials (grey) for cylindrical trial necks cylindrical				Coloured Large Head Trials Taper 12/14	
Item no.	Ø mm	Head-neck length mm	Corresponding prosthesis head	Item no.	
130-798/38	38	52	126-838	130-797/38	
130-798/40	40	53	126-840	130-797/40	
130-798/42	42	54	126-842	130-797/42	
130-798/44	44	55	126-844	130-797/44	
130-798/46	46	56	126-846	130-797/46	
130-798/48	48	57	126-848	130-797/48	
130-798/50	50	58	126-850	130-797/50	
130-798/52	52	59	126-852	130-797/52	
130-798/54	54	60	126-854	130-797/54	
130-798/56	56	61	99-0150/31	130-797/56	
130-798/58	58	62	99-0150/32	130-797/58	
130-798/60	60	63	99-0150/33	130-797/60	